

(Translation)
Announcement of Graduate School, Chiang Mai University
No. 24/2559
Subject: Foreign Language Conditions for Graduate Students

According to Regulation of Chiang Mai University, subject: Graduate Education 2559 B.E., Section 22: Foreign Language Conditions, along with the English Language criteria for first enrolling doctoral degree program approved by Chiang Mai University Council at 5th/2559 meeting on 28th May 2559 B.E., and by the Graduate School Executive Committee (GSEC) at the 12th/2559 meeting on 29th July 2559 B.E., foreign language criteria, conditions and operating procedure for graduate students are set as in the following sections:

1. The announcement of Graduate School, Chiang Mai University no. 14th/2558 announced on .../2558 is repealed by using this announcement instead.
2. This announcement is used for graduate students who start enrolling in the academic year 2559 (2016).
3. English language is used as one of the foreign language conditions for graduate students with the examination result from an institution shown in the following table:

Institutions	All Regular Master's Degree Programs	All International and Doctoral Degree Programs	English Language for First Enrolling in a Doctoral Degree Program
CMU- <i>e</i> TEGS	60	65	45
CU-TEP	60	75	45
TU-GET	500	550	500
KU-EPT	55	60	50
IELTS	5.0	5.5	4.0
TOEFL	PBT: 450 CBT: 133 IBT: 45	PBT: 500 CBT: 173 IBT: 61	450 133 45
TOEIC	650	not applicable	not applicable

The TOEIC score can be used only for master's degree programs in the fields of Visual Arts and BA.

Type-3 master's degree (with Independent Study) students must pass the foreign language conditions before applying for graduation.

All doctoral degree students, type-1 and type-2 master's degree students must pass the foreign language conditions before submitting thesis proposal, otherwise the approval of thesis title and registration will be deemed void.

Master's degree graduate who immediately continues a doctoral degree study may use the foreign language examination result from master's degree study, except the TOEIC examination result is not applicable for doctoral degree level.

Doctoral degree applicants in any type since 2nd semester of academic year 2559 (January 2017) must pass the English Language condition for first enrolling in a doctoral degree program, otherwise a Provisional Student status may be applied.

4. The foreign language examination results can be used within 2 years from the date of examination.

5. Graduate students who earn lower level from the CMU-*e*TEGS standard may take a 60-hour Intensive Integrated English for Graduate Students course comprising grammar, reading, writing and presentation, provided by the Humanities Academic Service (HAS) Center of Chiang Mai University.

Graduate students who have the eligible to take the Intensive Integrated English course must have a minimum score of CMU-*e*TEGS as follows:

for regular master's degree programs a minimum of 40

for doctoral degree program and international programs a minimum of 45

6. Foreign graduate students who use English as the main language and born in a country using English as the official language are eligible to pass the foreign language conditions. In case of graduate students who are studying in a program taught in English and doing thesis concerning Thai may use a Thai language proficiency examination result instead of English.

7. In case of using other language proficiency examination result other than English or any other special case, the program committee may propose the GSEC to consider as the final decision, endorsed by the graduate program committee, faculty/college/school graduate committee and the graduate school academic committee (GSAC).

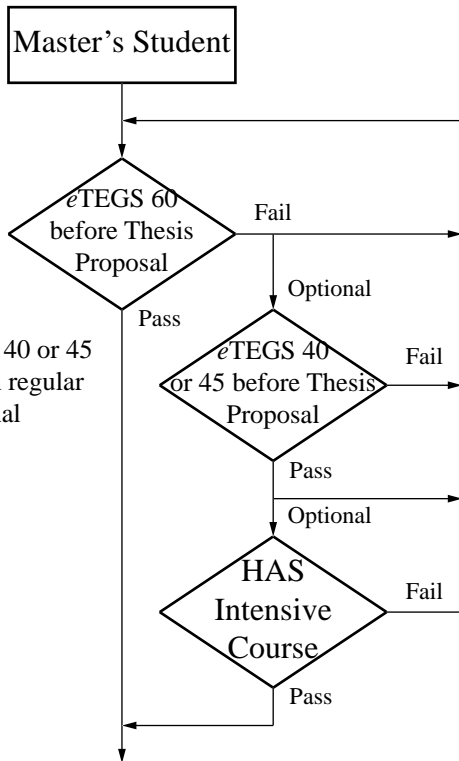
Announced on August 2559 B.E.

Associate Professor Akachai SANG-IN, Ph.D., DIC.
Dean of Graduate School

Note: In case of having any problem interpreting this translation of announcement or in case of going to court, it has to follow the essence of the announcement in Thai language.

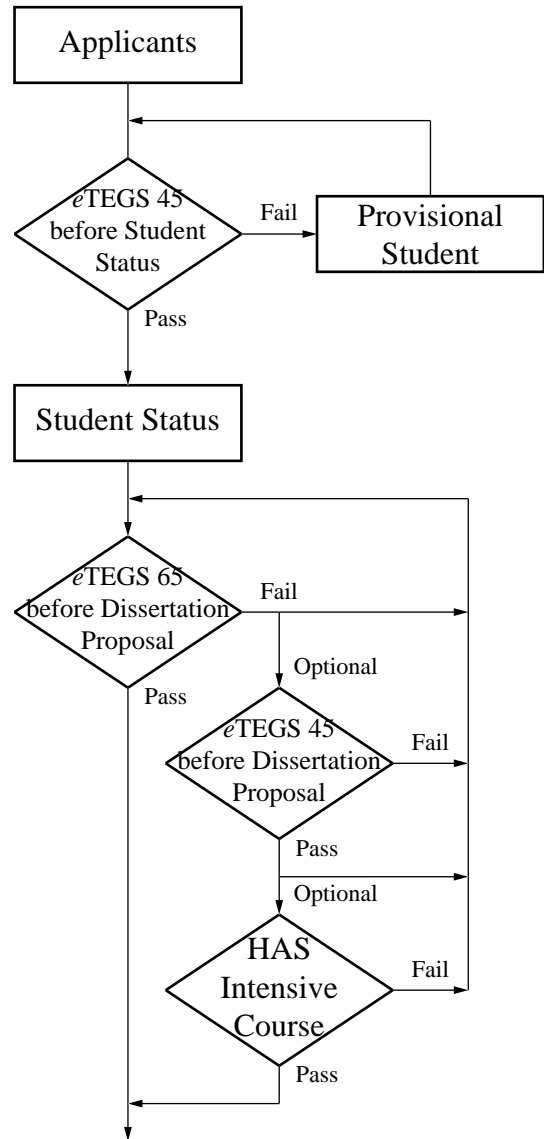
CMU English Criteria and Conditions for Graduate Students (from Code 59 ... on)

Master's Degree Type 1 and 2 (Plan A)

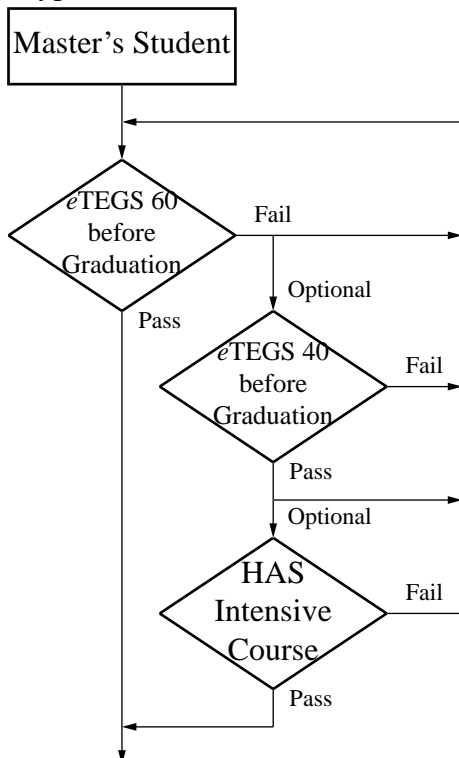


Note: Score 40 or 45 depending on regular or international program

Doctoral Degree Every Plan



Master's Degree Type 3 (Plan B)



Note: HAS Intensive Course is the Intensive Integrated English for Graduate Students provided by HAS Center (Humanities Academic Service Center) at the Faculty of Humanities